

Notices to Mariners, SWEDEN Swedish Maritime Administration



Areas in Swedish Notices to Mariners



SJÖFARTSVERKET

Editorial office
Swedish Maritime Administration
Ufs
601 78 NORRKÖPING
Sweden
tel: 0771 630 605
e-mail: ufs@sjofartsverket.se
Publisher:
Hydrographer Patrik Wiberg

Affected charts and Notices

Underrättelser för sjöfarande (Ufs) is an official Swedish publication which provides information pertaining to shipping in the Baltic Sea Area and Kattegat, as well as Skagerrak east of a line drawn between Hanstholm and Lindesnes.

The information on foreign waters is largely confined to significant occurrences which may affect Swedish charts. Ufs is thus wholly unsuited for the purpose of keeping BA-charts and/or other national charts updated.

An asterisk (*) in front of the number denotes that the notice is based on information obtained from Swedish source material and that the details contained therein affect Swedish waters.

When the letter (P) is adjacent to the notice number it serves as an indication that the notice is of a preliminary nature. Such notices will later be replaced by corresponding ones containing definitive information.

Similarly, when the letter (T) is placed adjacent to the notice number it denotes that the notice is of a temporary nature. In case no period of validity is given, this type of notice will be rendered invalid either when a new Temporary Notice is promulgated or if pertaining conditions cease to exist.

Bearings are true and given clockwise from 000° to 360° and, when given in conjunction with lights, indicate a direction from seaward.

Featured chartlets are primarily intended to simplify chart correction work and are not always true to scale. In general, they show the largest charted scale available for respective area.

Responsibility for the factual content published in Ufs rests with the informant.

Chart corrections and other information attributed to a specific geographical area can be found under NOTICES. Other information is found under ANNOUNCEMENTS, starting on pg. 3.

The periodical Ufs is normally published every Thursday and can be downloaded as a PDF-file from the homepage of the Swedish Maritime Administration. Note that as the file is automatically generated from a database unintentional page breaks may occur at random.

Further information on the use of Ufs can be found in the annual publication *Ufs A*.

Reporting dangers and errors

All observations concerning floating aids to navigation, unlit beacons and lights, objects adrift or any other occurrence which may have a detrimental impact on safety at sea are to be forwarded to MSI Sweden at the earliest possible opportunity.

Call: MSI Sweden

VHF Channel: Appropriate working channel

Phone: +46 771 630 685 (24/7)

E-mail: msi@sjofartsverket.se

Affected charts	Notice no	Sign
6	13392 (T)	
7	13392 (T)	
71	13399 (T)	
71	13408	
74	13408	
83	13408	
131	13312	
514	13412	
535	13296	
616	13386	
616	13393 (T)	
621	13316	
624	13327	
741	13408	
742	13124	
922	13252	
923	13252	
924	13419 (T)	
931	13297	
934	13401	
937	13401	
1353	13407	
4151	13406 (T)	
5342	13409	
6141	13387 (T)	
6142	13387 (T)	
6142	13398 (T)	
6145	13382	
6162	13393 (T)	
6163	13386	
6163	13393 (T)	
6173	13377	
6173	13378	
6211	13316	
7411	13408	

ANNOUNCEMENTS

No Announcements in this booklet.

NOTICES

Bay of Bothnia

* 13406 (T)

Chart: 4151

Sweden. Bay of Bothnia. Piteå. Bondön. Canal "Bondökanalen" closed for traffic.

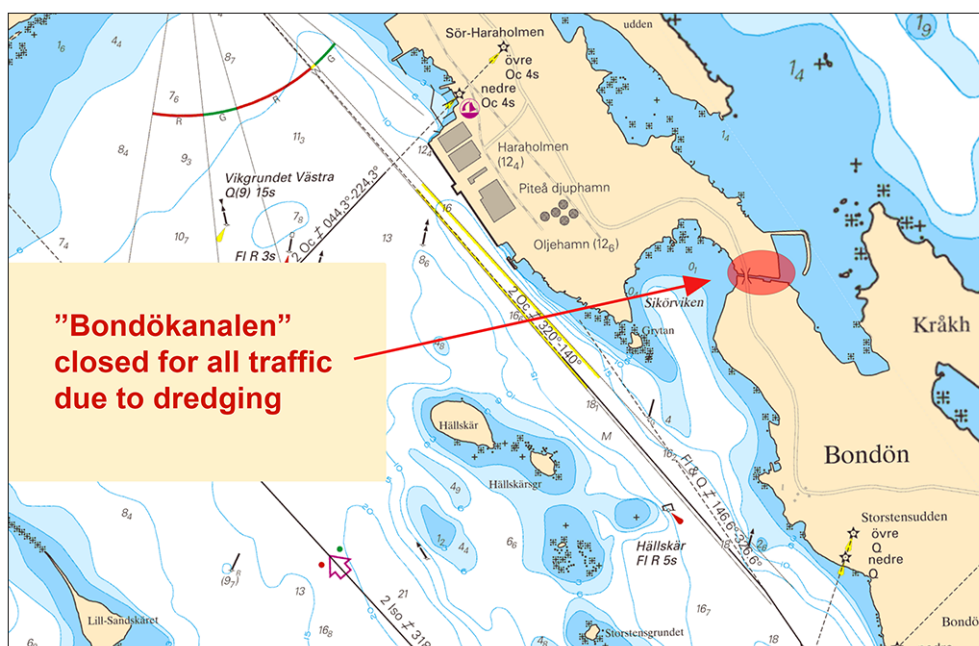
Time: until further notice

The canal "Bondökanalen" is closed for all traffic due to dredging.

Bondökanalen	65-13,95N	021-39,30E
--------------	-----------	------------

Not shown in ENC.

Bsp Bottenviken 2018/s35, s56



Canal "Bondökanalen"

Piteå kommun. Publ. 13 september 2018

Sea of Bothnia

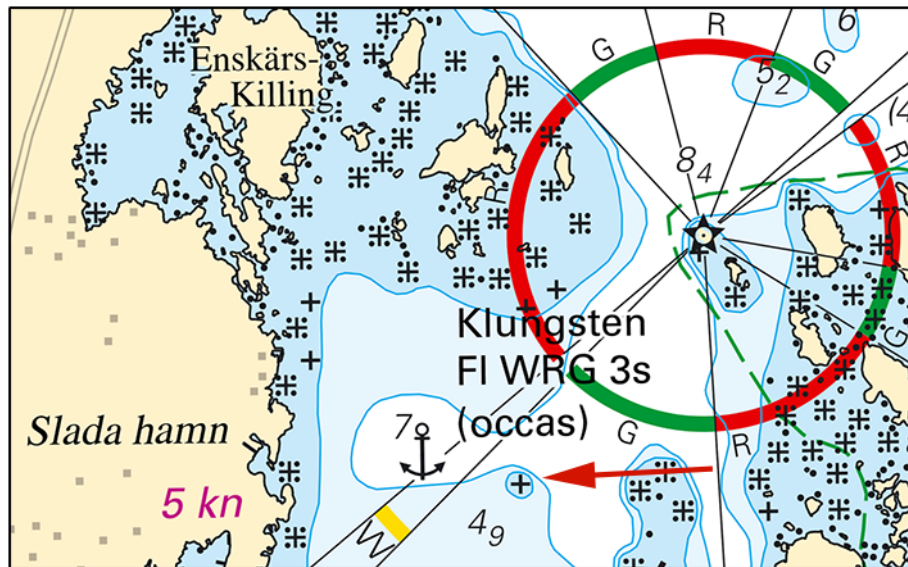
* 13296

Chart: 535

Sweden. Sea of Bothnia. SW of Klungsten. Slada hamn. Shoal.

Insert	underwater rock and 3 m depth contour	60-32,81N	018-01,95E
--------	---------------------------------------	-----------	------------

Bsp Bottenhavet S 2013/s32, Bsp Stockholm N 2018/s10



Slada hamn

Sjöfartsverket. Publ. 12 september 2018

* 13409

Chart: 5342

Sweden. Sea of Bothnia. Gävle. Yttre fjärden. W of Granskär. Spar buoy.

Insert	west cardinal spar buoy	60-43,025N	017-17,787E
--------	-------------------------	------------	-------------

Bsp Bottenhavet S 2013/s36, s38

Gävle hamn. Publ. 13 september 2018

* 13412

Chart: 514

Sweden. Sea of Bothnia. Port of Husum. Buoyage.

Amend	starboard-hand spar buoy to starboard-hand light spar buoy FI G 3s	63-18,839N	019-09,072E
-------	--	------------	-------------

Bsp Bottenhavet N 2013/s22

Metsä Board Sverige AB. Publ. 13 september 2018

Gulf of Finland

* 13392 (T)

Chart: 6, 7

Sweden. Northern Baltic, Gulf of Finland, Central Baltic, South-Eastern Baltic, Southern Baltic. NE, SE of Gotland. Underwater works. Nord Stream 2.

Expired notices: 2018:711/12978(T)

Time: July - November, 2018.

Underwater operations will take place at the locations listed below.

Rocks will be dumped on the seabed as a preparation for the laying of gas pipelines.

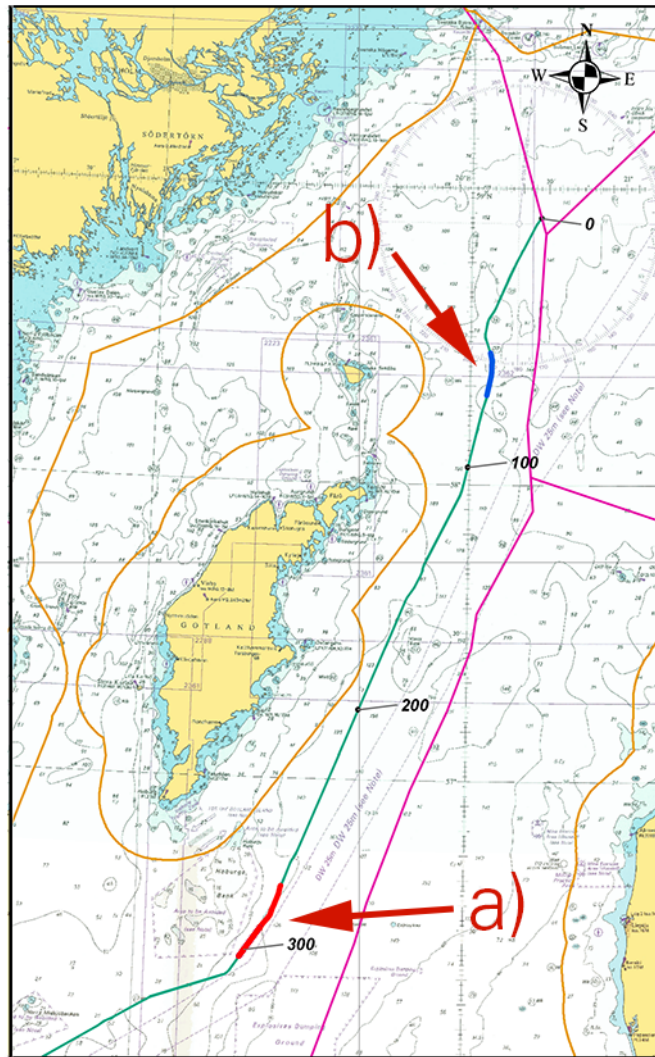
The works will be carried out by the vessel Oceanic (9HA4426) and Bravenes (PDCF) or Nordnes (PHOG).

The time schedule is depending on the weather situation and is very approximate.

Requested safety zone: 500 m radius around vessel during rock placement activities.

E of Hoburgs bank	a)	56-32,6N	018-50,1E
E of Gotska sandön	b)	58-25,8N	020-08,2E

Not shown in ENC



Rock placement operations, NordStream2

Nord Stream 2 Publ. 11 september 2018

Northern Baltic

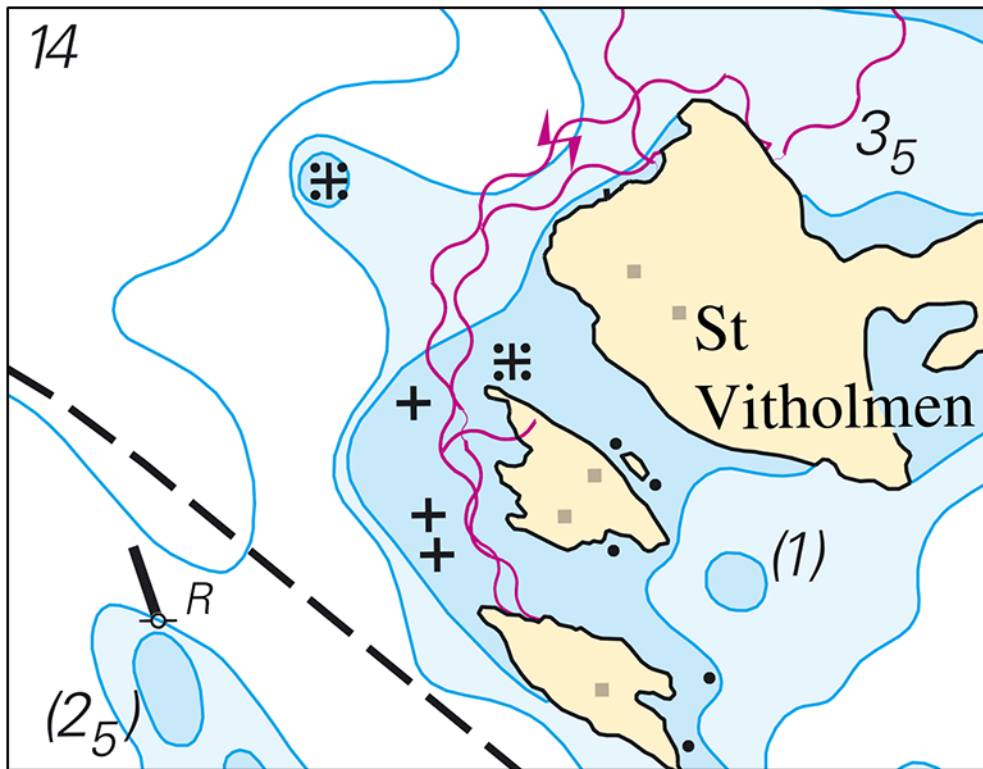
* 13316

Chart: 621, 6211

Sweden. Northern Baltic. Oxelösund. Marsviken. Shoal.

Insert	underwater rock		a)	58-40,115N	017-01,706E
Insert	underwater rock		b)	58-40,106N	017-01,717E
Insert	underwater rock		c)	58-40,089N	017-01,724E
Amend	3 m depth contour	(as shown i chartlet)	d)	58-40,119N	017-01,692E
Amend	6 m depth contour	(as shown in chartlet)	e)	58-40,133N	017-01,658E

Bsp Ostkusten 2015/s27



Stora Vitholmen

Sjöfartsverket. Publ. 12 september 2018

* 13377

Chart: 6173

Sweden. Northern Baltic. E of Studsvik. Långön. Sävö. Light Sävösund. Sectors.

Change of sectors on light Sävösund as per below.

Light Sävösund	58-45,89N	017-28,49E
----------------	-----------	------------

Bearing (from sea towards light)	Colour
093,0 - 102,0	G
102,0 - 109,0	W
109,0 - 253,0	R
253,0 - 272,0	G
272,0 - 275,0	W
275,0 - 296,0	R
296,0 - 093,0	Dk

Adm. LoL C6750

Bsp Ostkusten 2015/s14, s61



Sävösund

Sjöfartsverket. Publ. 13 september 2018

* 13378

Chart: 6173

Sweden. Northern Baltic. E of Studsvik. Tvären. Light Märhällan. Sectors.

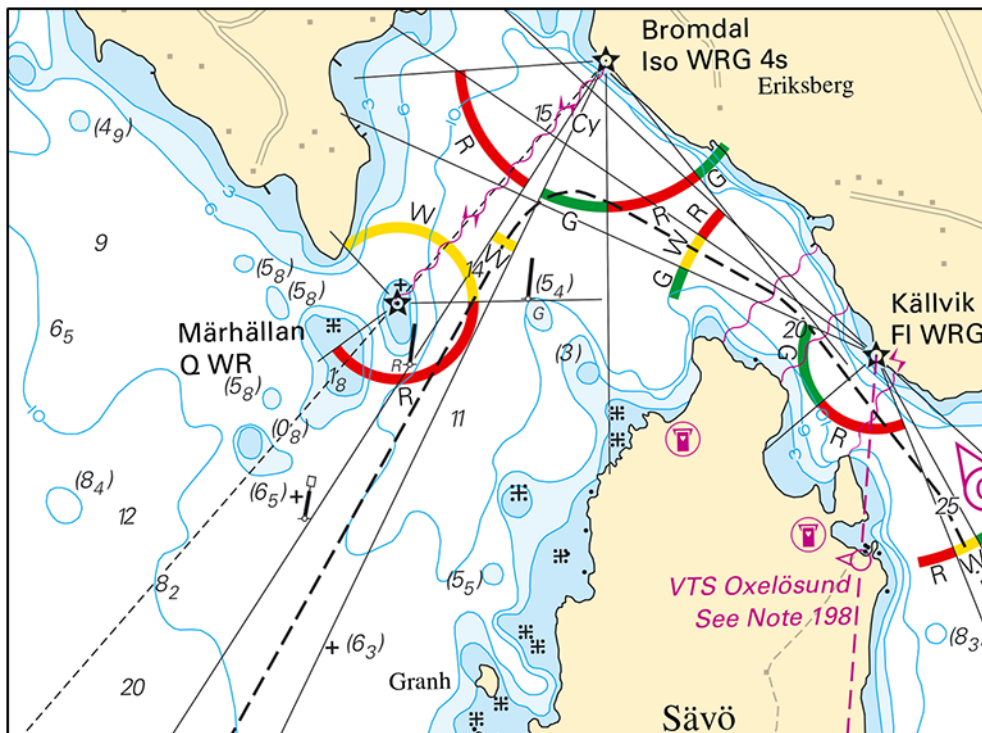
Change of sectors on light Märhällan as per below.

Light Märhällan	58-46,85N	017-27,64E
-----------------	-----------	------------

Bearing (from sea towards light)	Colour
055,0 - 138,0	Dk
138,0 - 270,0	W
270,0 - 55,0	R

Adm. LoL C6754

Bsp Ostkusten 2015/s13, s14



Märhällan

Sjöfartsverket. Publ. 12 september 2018

* 13382

Chart: 6145

Sweden. Northern Baltic. Stockholm archipelago. Ingarö. Björnö. Underwater rock.

Insert	underwater rock	59-14,384N	018-33,046E
--------	-----------------	------------	-------------

Bsp Stockholm M 2018/s28

Sjöfartsverket. Publ. 5 september 2018

* 13386

Chart: 616, 6163

Sweden. Northern Baltic. Stockholm archipelago. Gålö. Askviken. Power cable removed.

Delete	overhead power cable	59-05,931N	018-17,117E
--------	----------------------	------------	-------------

Bsp Stockholm M 2018/s42, Bsp Stockholm S 2018/s09

Sjöfartsverket. Publ. 5 september 2018

* 13393 (T)

Chart: 616, 6162, 6163

Sweden. Northern Baltic. E of Utö. Firing exercises. September 17 - October 5.

Firing exercises will be carried out within Utö firing range during stated times. The current extension of the closed area is given in the table.

Signal ammunition is used during hours of darkness.

Information during practice times VHF channel 16, call Utö skjutfält, or phone +46 8 501 570 45. Information about upcoming practice times, phone: +46 10 823 18 23, Muskö Sjöcentral.

Date	Time	Range from shore
September 17	0900 - 2100 LT	2,4 M
September 18	0900 - 2200 LT	2,4 M
September 19	0800 - 2200 LT	2,4 M
September 25 - 30	0830 - 1900 LT	4,1 M
October 1 - 5	0830 - 1900 LT	4,1 M

Position: Approx.	58-54N	018-20E	Utö Firing Danger Area
-------------------	--------	---------	------------------------

Not shown in ENC.

Bsp Stockholm S 2018/s17, s18, s19, s37

Försvarsmakten. Publ. 8 september 2018

*** 13398 (T)**

Chart: 6142

Sweden. Northern Baltic. Stockholm. Grisslingen. Motorboat race. Temporarily closed area Sept 22.

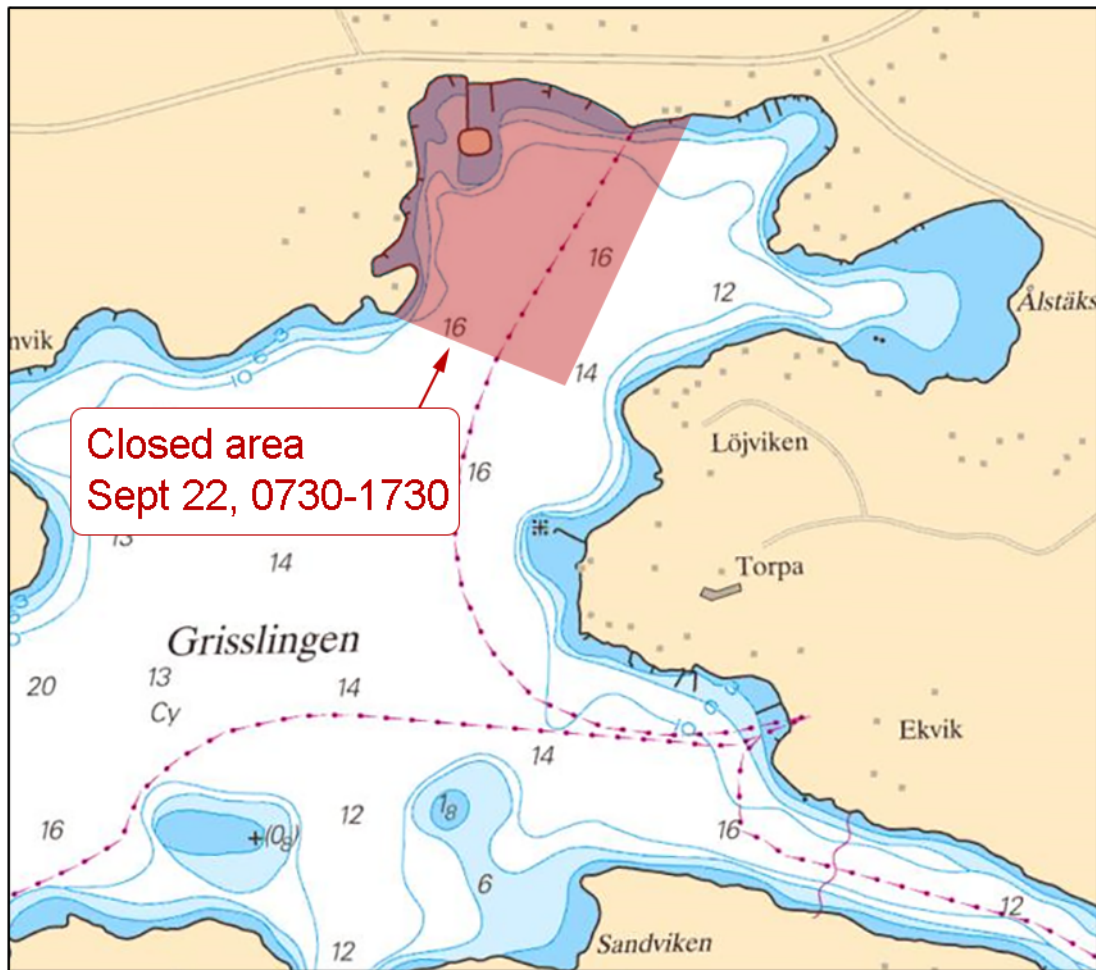
Time: September 22, 0730 - 1730 LT

The area marked on chartlet will be closed for traffic during the stated time due to a motorboat race.

Closed area	59-18,61N	018-26,88E
-------------	-----------	------------

Not shown in ENC.

Bsp Stockholm M 2018/s21



Closed area. Power boat race

Länsstyrelsen Stockholm. Publ. 13 september 2018

Lake Mälaren and Södertälje Canal

* 13387 (T)

Chart: 6141, 6142

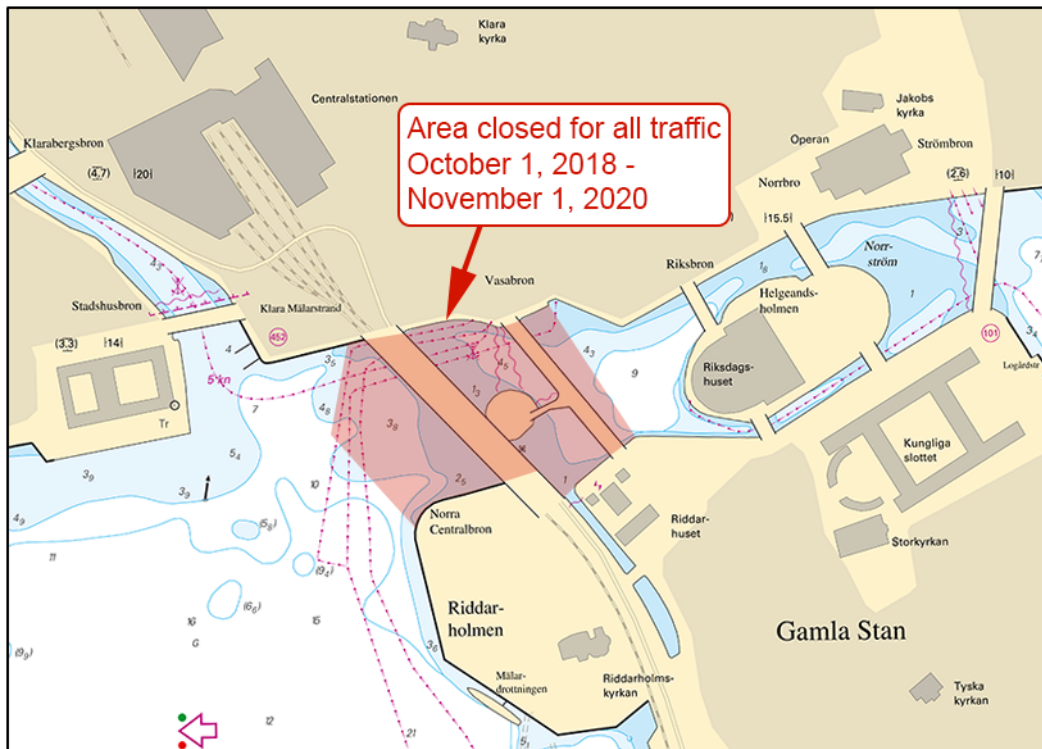
Sweden. Lake Mälaren and Södertälje Canal. Stockholm. N of Riddarholmen. Bridge Norra Centralbron.
Closed area. Bridge repair.

Time: October 1, 2018 - November 1, 2020.

Repair works on bridge Norra Centralbron will be carried out during the stated time. The area marked in the chartlet will be closed for all traffic.

Bridge Norra Centralbron	59-19,622N	018-03,727E
--------------------------	------------	-------------

Bsp Mälaren - Hjälmarén 2016/s51, s52, Bsp Stockholm M 2018/s06, s10



Bridge Norra Centralbron

Länsstyrelsen Stockholm. Publ. 12 september 2018

Central Baltic

* 13327

Chart: 624

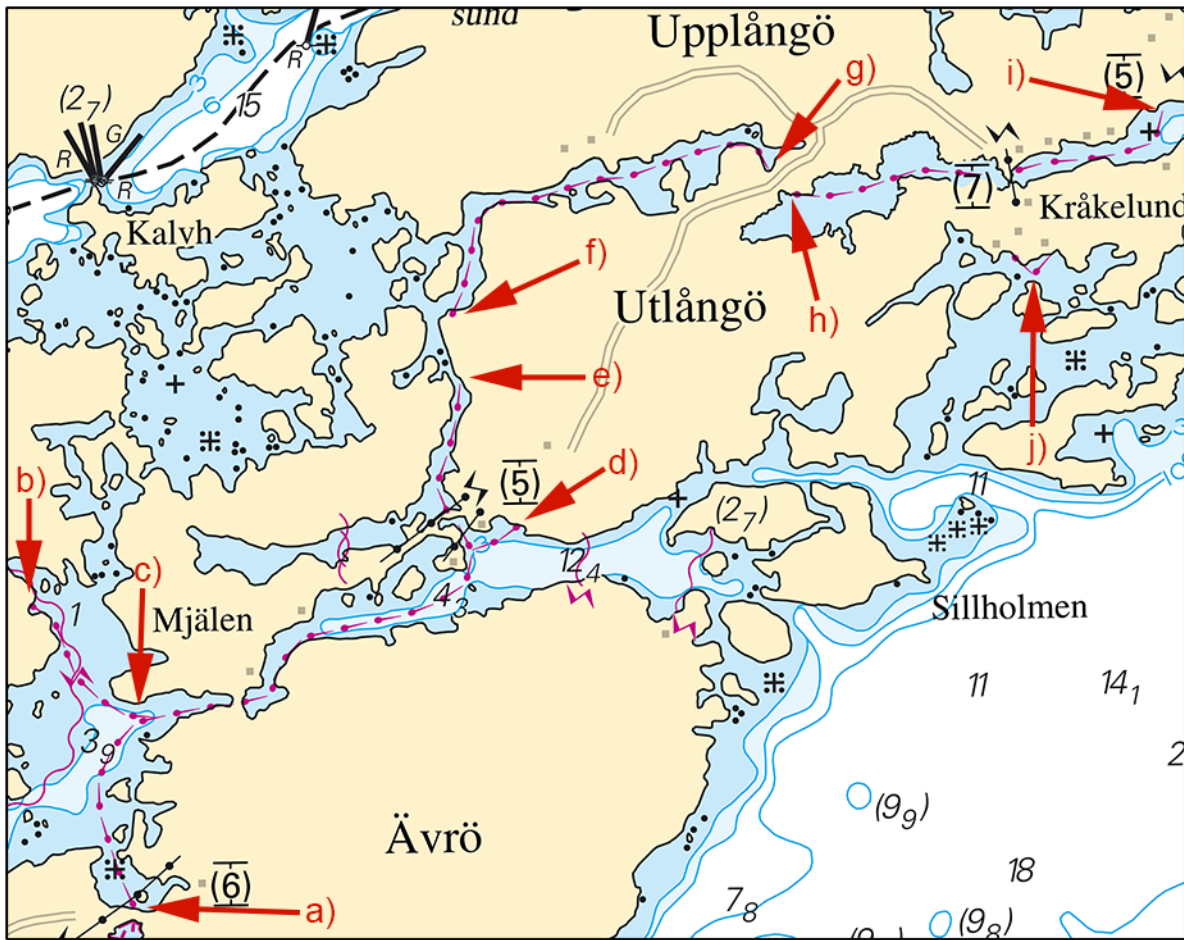
Sweden. Central Baltic. Kalmarsund. N of Simpevarp. Supply pipeline.

Due to land rising there is a difference between current edition of chart and attached chartlet. See NtM SE13140 for more information about "The Chart Improvement Project".

Insert	supply pipeline between position a) - i)	(see attached chartlet for reference)	a)	57-25,444N	016-40,124E
			b)	57-25,924N	016-39,839E
			c)	57-25,738N	016-40,121E
			d)	57-26,042N	016-41,269E
			e)	57-26,281N	016-41,100E
			f)	57-26,393N	016-41,082E
			g)	57-26,600N	016-42,029E
			h)	57-26,569N	016-42,082E
			i)	57-26,703N	016-43,189E

Insert	supply pipeline by position j)	(see attached chartlet for reference)	j)	57-26,433N	016-42,800E
---------------	--------------------------------	---------------------------------------	----	------------	-------------

Bsp Kalmarsund 2014/s10, s11, s12



Supply pipeline

Oskarshamns kommun. Publ. 12 september 2018

* 13399 (T)

Chart: 71

Sweden. Central Baltic. Gotland. Burgsvik. Leading lights unlit.

Expired notices: 2017:642/11954

Leading lights at Burgsvik are temporarily unlit.

Burgsvik, 2 Iso 4s	57-02,93N	018-17,21E
--------------------	-----------	------------

Not shown in ENC.

Adm. LoL vol. C 7214, 7214:1

Bsp Kalmarsund 2014/s07

Region Gotland. Publ. 8 september 2018

Southern Baltic

* 13124

Chart: 742

Sweden. Southern Baltic. Sölvesborg approach. Depth.

Change of depths in the approach to Sölvesborg following a hydrographic survey.

Insert	7,5	a)	56-00,596N	014-33,973E
Delete	8,5	b)	55-59,979N	014-33,374E
Insert	8,3	c)	55-59,997N	014-33,416E
Delete	(9,2)	d)	55-59,109N	014-33,434E
Insert	(8,8)	e)	55-59,103N	014-33,281E

Bsp Hanöbukten 2018/s22, s25, s52

Sjöfartsverket. Publ. 8 september 2018

* 13408

Chart: 71, 74, 741, 7411, 83

Sweden. Southern Baltic. Karlskrona. S of Tjurkö. Tjurkö sten. Radar reflector removed.

Expired notices: 2017:647/11999

Delete	radar reflector	56-04,458N	015-36,208E
--------	-----------------	------------	-------------

Bsp Hanöbukten 2018/s05, s06, s16, s38

Sjöfartsverket. Publ. 12 september 2018

Kattegat

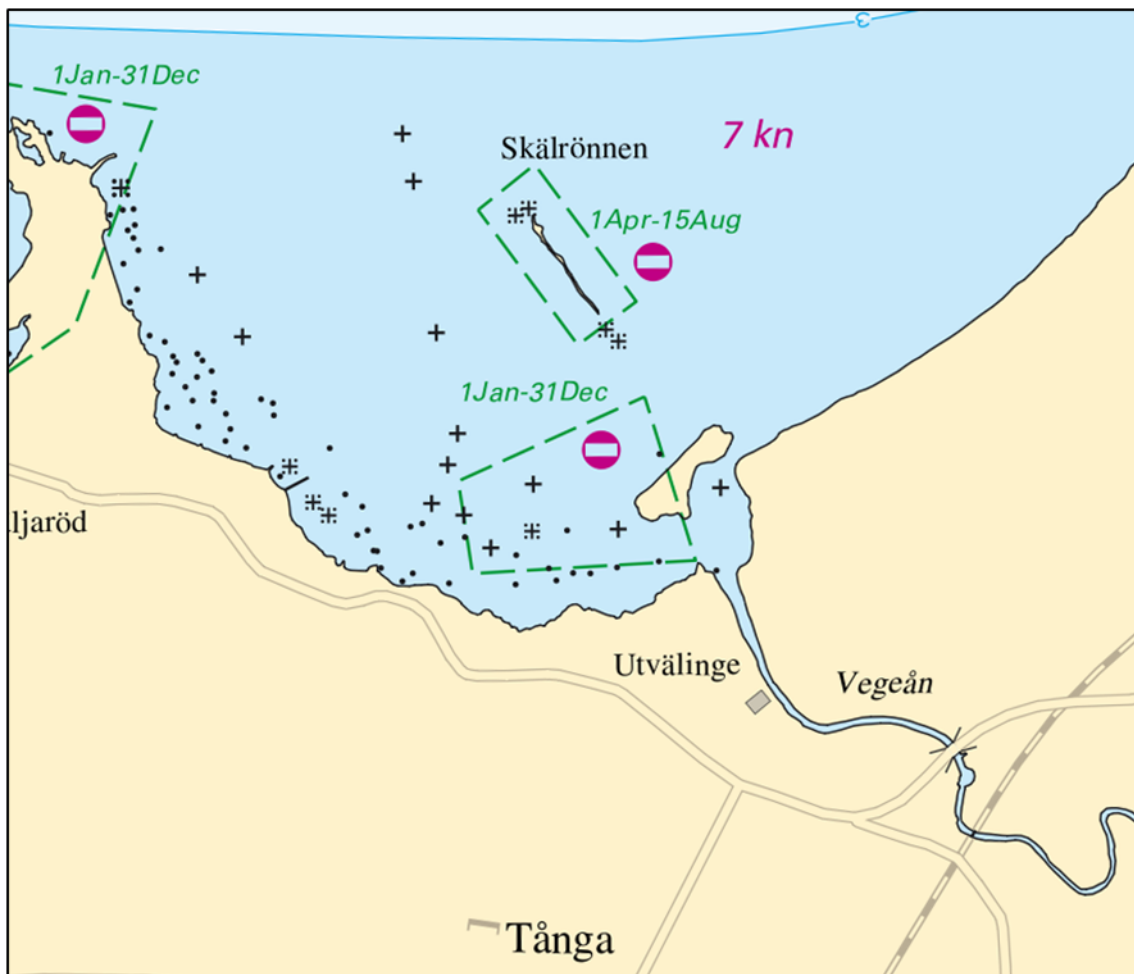
* 13252

Chart: 922, 923

Sweden. Kattegat. Skälderviken. Skälörönnen. Nature reserve into which entry is prohibited.

Delete	nature reserve into which entry is prohibited	a)	56-13,509N	012-46,901E
		b)	56-13,549N	012-47,056E
		c)	56-13,422N	012-47,091E
		d)	56-13,371N	012-47,053E
		e)	56-13,355N	012-46,936E
Amend	nature reserve into which entry is prohibited	f)	56-13,334N	012-46,222E
		g)	56-13,481N	012-46,808E
		h)	56-13,194N	012-46,967E
		i)	56-13,172N	012-46,266E
Amend	1Apr-15Jul to 1Jan-31Dec	j)	56-13,483N	012-46,571E

Bsp Sydkusten 2012/s09, Bsp Västkusten S 2016/s35



Skälörönnen

Länsstyrelsen Skåne. Publ. 12 september 2018

* 13297

Chart: 931

Sweden. Kattegat. Gothenburg northern archipelago. Rörö. Spar buoy withdrawn.

Delete	starboard hand spar buoy	57-46,300N	011-37,360E
--------	--------------------------	------------	-------------

Bsp Västkusten S 2016/s16, s17

Transportstyrelsen. Publ. 7 september 2018

* 13419 (T)

Chart: 924

Sweden. Kattegat. Falkenberg. Leading lights moved.

Expired notices: 2018:719/13362(T)

The leading lights in Falkenberg are moved to new positions.

The lights will be unlit and the leading line will be unreliable during some time before the new positions have been properly established.

Mariners are requested to proceed with caution.

Upper leading light, west	a)	56-53,583N	012-28,728E
Upper leading light, east	b)	56-53,570N	012-28,771E
Lower leading light, west	c)	56-53,399N	012-28,515E
Lower leading light, east	d)	56-53,371N	012-28,541E

Not shown in ENC.

Bsp Västkusten S 2016/s27, s66

Falkenbergs Terminal. Publ. 13 september 2018

Skagerrak*** 13401****Chart: 934, 937****Sweden. Skagerrak. SW of Syd-Koster. Lådderskären. Special spar buoy withdrawn.**

Delete	special spar buoy	58-51,592N	011-00,591E
---------------	-------------------	------------	-------------

Bsp Västskusten N 2016/s08

*Göteborgs universitet. Publ. 12 september 2018***Lake Vänern and Trollhätte Canal***** 13312****Chart: 131****Sweden. Lake Vänern and Trollhätte Canal. Lake Vänern. O om Bären. N om Gravkultarna. Shoal.**

Delete	4,2	59-15,419N	013-16,679E
Insert	underwater rock with 3 m depth contour	59-15,419N	013-16,679E

Bsp Vänern 2018/s10, s11

*Sjöfartsverket. Publ. 13 september 2018**** 13407****Chart: 1353****Sweden. Lake Vänern and Trollhätte Canal. Göta älv. Lilla Edet. Smörkullen. Amendments to leading lights.**

Amend	character on the leading light 'Smörkullen övre' to Iso G 2s	58-08,701N	012-07,940E
Amend	character on the leading light 'Smörkullen nedre' to Q G	58-08,768N	012-07,913E

Bsp Göta kanal 2011/s48

Sjöfartsverket. Publ. 13 september 2018